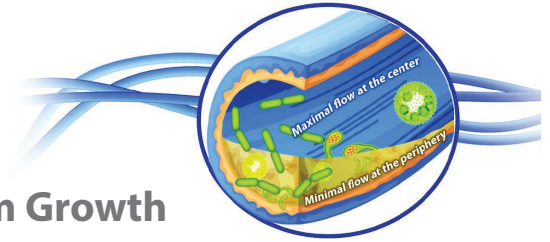




Why Treat Dental Unit Waterlines?

Narrow Tubing = Microbial Colonization = Biofilm Growth

Research shows that the extremely narrow design of waterline tubing promotes water stagnation and bacterial accumulation¹. Untreated DUWLs may contain more than 1,000,000 CFU/mL due to biofilm buildup².



With the DentaPure® Cartridge, Ensuring Dental Unit Waterline Safety Has Never Been Easier

The DentaPure® cartridge for bottle and municipal dental unit waterlines, uses the same proven technology developed for NASA to ensure water consumed in space is safe from harmful levels of bacteria and many other harmful organisms.


The DentaPure cartridge is EPA registered as a microbiological dental unit water purifier providing safe and compliant dental unit water for 365 days (or 240L of water, if usage records are kept), ensuring that your practice meets or exceeds water quality having a maximum of 200 CFU/mL³.



How Does the DentaPure Cartridge Work?



The DentaPure® cartridge contains non-allergenic iodinated resin beads



As water passes through, the resin releases 2 - 6 ppm of atomic isotopes of elemental iodine (I₂) during a typical dental treatment



The (I₂) isotopes control the bacteria, keeping dental unit water safe for 365 days*

Iodine Facts

- The elemental iodine in the DentaPure cartridge contains **NO ALLERGENIC PROTEINS**.
 - People are not allergic to iodine; they are allergic to the protein sometimes attached to it⁴.
- 2-6 ppm of iodine is less than an 8oz serving of broccoli⁵.

Ordering Information:

Description	Ref#
Independent Water Bottle Cartridge	DP365B
Municipal Cartridge	DP365M



Waterline Treatment



The DentaPure® Cartridge - Simplifying DUWL maintenance protocols

SAFE

- Elemental iodine (I₂) is non-allergenic⁴
 - Safe for patients to ingest
- Contains no silver
- Compliant with the proposed EPA rule for BMP for dental amalgam waste⁶
 - The pH of the DentaPure® cartridge falls between 6 and 8 - within the EPA BMP acceptable range⁷
- No harsh chemicals
- Dispose of used cartridges in your regular trash

SIMPLE

- Installs in minutes
- Cost-effective
- Compatible with bottle and municipal systems
- Can use either tap or distilled water
- Once the DentaPure cartridge is installed, no monitoring or shocking protocol is required for 365 days, or 240L of water if usage records are kept

RELIABLE

- Reduces the risk of human error
- 1 DentaPure cartridge purifies dental unit water for 365 days, or 240L of water if usage records are kept
- Will not interfere with dental materials and bonding⁸
- No concerns with dental unit corrosion or etching³
- Crosstex reminds you when it's time to change cartridges

EFFECTIVE

- In independent ADA testing, the DentaPure cartridge performed at ≤ 10 CFU/mL⁹
- EPA registered to provide ≤ 200 CFU/mL

CROSSTEX ENDORSES FOLLOWING INFECTION CONTROL BEST MANAGEMENT PRACTICE RECOMMENDATIONS SET FORTH BY THE CDC, ADA AND OSAP

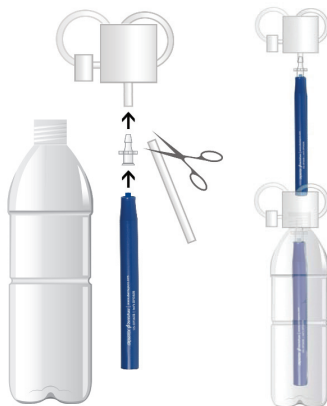
1 DentaPure® cartridge



365 Days of safe, compliant dental unit water*

Visit www.dentapure.com to see how simple installation is and for more information on simplifying your DUWL maintenance protocols.

The DentaPure® DP365B cartridge installs onto your dental unit's existing water bottle pickup tube.



Choose the DentaPure® cartridge that's right for your office.

Municipal Cartridge DP365M



Independent Water Bottle Cartridge DP365B

get 1 CEU

Crosstex offers a free Waterline Treatment course:

Children Hospitalized from Contaminated Dental Unit Water: Could This Happen in Your Office?

Register Today at CrosstexLearning.com

¹ http://www.osap.org/?page=Issues_DUWL_1

² <https://www.cdc.gov/oralhealth/infectioncontrol/guidelines/slides/077.htm>

³ Data on file.

⁴ Schabelman E1, Witting M. The relationship of radiocontrast, iodine, and seafood allergies: a medical myth exposed, J Emerg Med. 2010 Nov;39(5):701-7. doi: 10.1016/

⁵ <http://www.whfoods.com/genpage.php/genpage.php?tname=nutrientprofile&dbid=82>

⁶ <https://www.epa.gov/eg/dental-effluent-guidelines-documents>

⁷ Batchu H, Chou H, Rakowski D, Fan PL. The effect of disinfectants and line cleaners on the release of mercury from amalgam.: JADA 2006 Oct:1419-1425

⁸ Puttaiah R. Effects of Low Grade Iodine in Dental Unit Waterlines On Shear Bond Strength of a Dentin Bonding Agent, Baylor College of Dentistry

⁹ A Laboratory Evaluation of Dental Unit Water Treatment Systems. ADA Professional Product Review - 2014: Vol 9, Iss 2: 9-17

All claims made when used with potable water. *or 240L of water if usage records are kept



Crosstex International, Inc.
10 Ranick Road
Hauppauge, NY 11788

Phone: 1.888.276.7783
www.crosstex.com
www.dentapure.com